



**BASIN ELECTRIC
POWER COOPERATIVE**

A Touchstone Energy® Cooperative 

2022 Strategic Objectives Member Managers Conference

Andy Buntrock

February 2022

Timeline and Deliverables



Delivery Date	Meeting	Deliverables
6 Dec 2021	Due to Strategic Planning	SWOT complete on Industry and BEPC - each Sr. VP
16 Dec 2021	Optimization Meeting	SWOT compilation of Industry
6 Jan 2022	Optimization Meeting	SWOT compilation of BEPC
12 Jan 2022	BEPC Board	Strategy and Timeline Overview with BOD
Jan-Feb 2022	Multiple Optimization Meetings	2022 Strategic Objectives recommendation completed
14 Feb 2022	BEPC Board	Strategic Planning - 2022 Strategic Objectives development <ul style="list-style-type: none"> • Present 2022 Strategic Objectives recommendations • Discussion and finalization of 2022 Strategic Objectives • Overview of analysis and research for 2022
23 Feb 2022	Manager Conference	Strategic Planning - 2022 Strategic Objectives roll out
1 March 2022	Due to Strategic Planning	2022 Department Initiatives - each Sr. VP
11 July 2022	BEPC Board	Strategic Planning - 2022 Strategic Objectives update
20 July 2022	Manager Conference	Strategic Planning - 2022 Strategic Objectives update
10 Nov 2022	Members-Only Meeting	2022 Strategic Objectives accomplishments / updates

Tools to Develop

SWOT

- Industry
- Basin Electric and subsidiaries



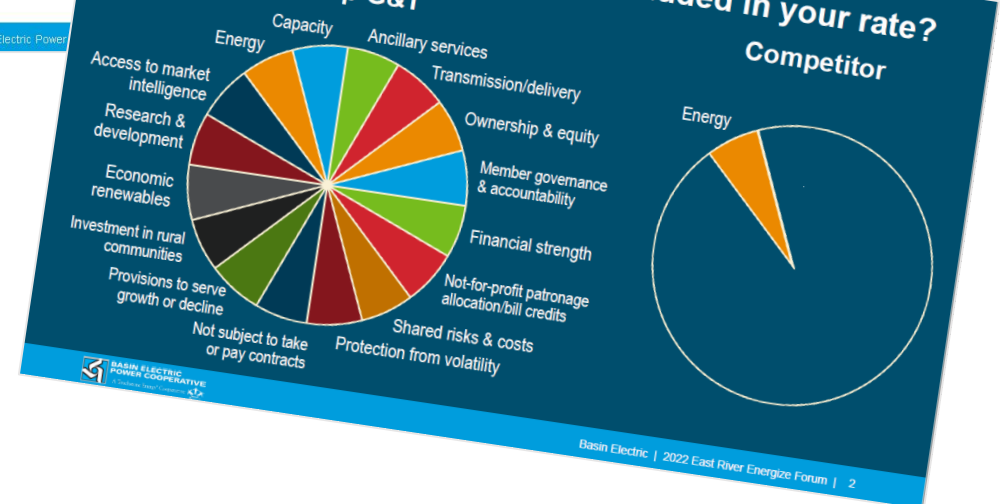
Prioritizing Key Issues

(Paulsen Survey of Basin Electric Membership - 2020)

1. Affordable rates
2. Reliable power
3. Resolving DGC
4. Strategic Plan
5. Expected load growth
6. Improving communication
7. Transition from coal
8. Increasing renewables
9. Future workforce
10. Long-term contracts

Basin Electric Power Cooperative | 1

What products & services are included in your rate?



Basin Electric | 2022 East River Energize Forum | 2

2022 BEPC
STRATEGIC GOAL

FORWARD TOGETHER

**MEMBER & EMPLOYEE
FOCUS**

PROVIDE VALUE

NAVIGATE THE FUTURE

2022 STRATEGIC OBJECTIVES

DEPARTMENT INITIATIVES

FORWARD TOGETHER

MEMBER & EMPLOYEE FOCUS

- Maintain safe and compliant work environment
- Enhance trust, alignment, and cooperation among member-owners and employees
- Attract, develop, and retain an engaged employee workforce
- Member value driven decision making process

PROVIDE VALUE

- Invest responsibly to meet member demand, ensure reliability, and enhance resiliency
- Influence stakeholders to prioritize and value cost-effective reliability
- Manage power market and commodity volatility to protect member rate
- Sustain vigilant expense discipline
- Highlight and preserve the wholesale power contracts as our linchpin
- Drive ownership benefits to create economic prosperity and growth opportunities in rural America

NAVIGATE THE FUTURE

- Advocate for the cooperative business model
- Execute margin allocation philosophy
- Execute DGC plant options and transition
- Develop a dynamic generation portfolio strategy driven by member needs and goals
- Execute financial and operational stewardship to maintain an 'A' credit rating